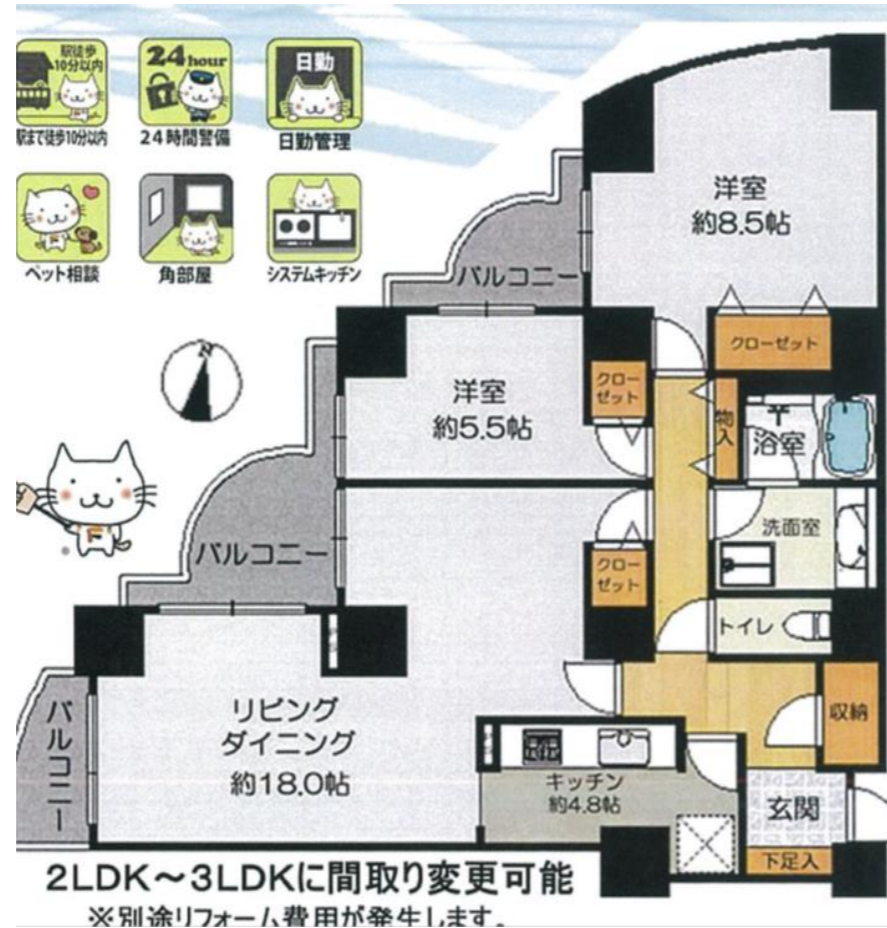
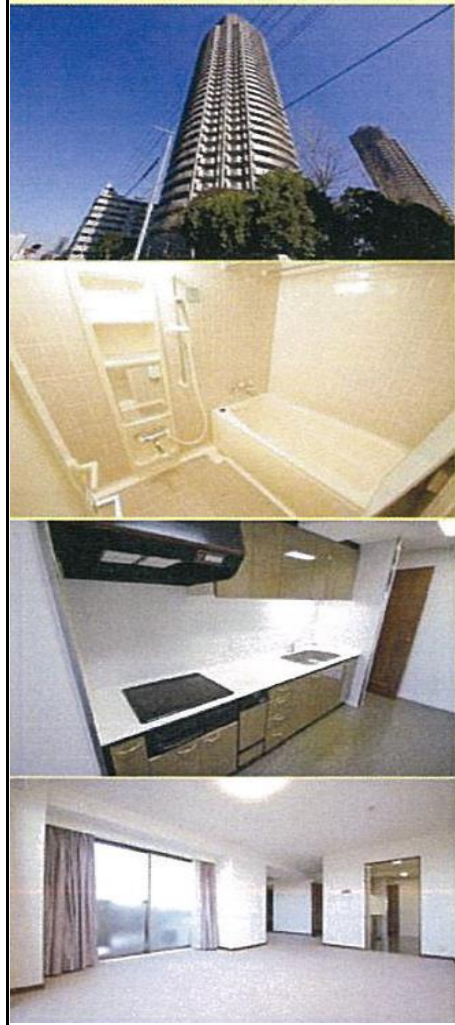


# FLOOR PLAN

No: 20000917044



# OUTLINE

Building Name	The Garden Towers Sunset Tower			
Price	5,680 ten-thousand yen			
Monthly Cost	Management	17,600 yen	Maintenance	19,050 yen
Location	1-2-2,Ojima ,Koto-ku, Tokyo.			
Traffic Situation	Nearest station	Tokyo subway Hanzomon Line,【Sumiyoshi】station : 6 min-walk.		
	Other station	Tokyo Shinjuku Line,【Nishioojima】 station : 7 min-walk.		
Land	Area	12736.65 m <sup>2</sup>	Share of the Land	9523 / 4247218
	Ownership Form	ownership	Incident	/
	Report of Country Law	/	Use Districts	quasi-industrial districts
Building	Balcony Size	12.35 m <sup>2</sup>	Balcony Aspect	west
	Area	95.23m <sup>2</sup>	Floor Layout	2LDK
	Structure	RC Structure, 39floors above ground, two-story basement (6th floors).		
	Date of completion	Jan.1997,	Number of Units	470 units
	Construction Master	Joto steelmaking Co.,Lit.	Construction Company	Taisei Corporation Co.,Lit.
	Management Company	Tokyu Community Corpration Co.,Lit.	Management Form	day shift
Facilities	Electricity	✓	Water	✓
	Sewage	✓	Gas	city gas
	Parking	✓	Parking Fee/M	22,000~35,000
	Automatic Lock	/	Elevator	✓
	Other Facilities	System Kitchen, Trunk Room,Hot Water Supply, Washing Machine Installation Area,CATV, Coner Room, 24 hours security management,		
Notes	Pet breeding is possible(It is limited by the management agreement).			

**FUKUYAKA Real Estate Consulting (Shanghai) Co., Ltd.**

ADD: 〒200040 Room68 38F NO.1601 West Nanjing Road, Jing'an District, Shanghai

TEL: 021-6136-3272

FAX: 021-6137-3210

Mall: info@fukuyaka.cn

URL:http://www.fukuyaka.cn

**FUKUYAKA**

Principal	Operator	Form