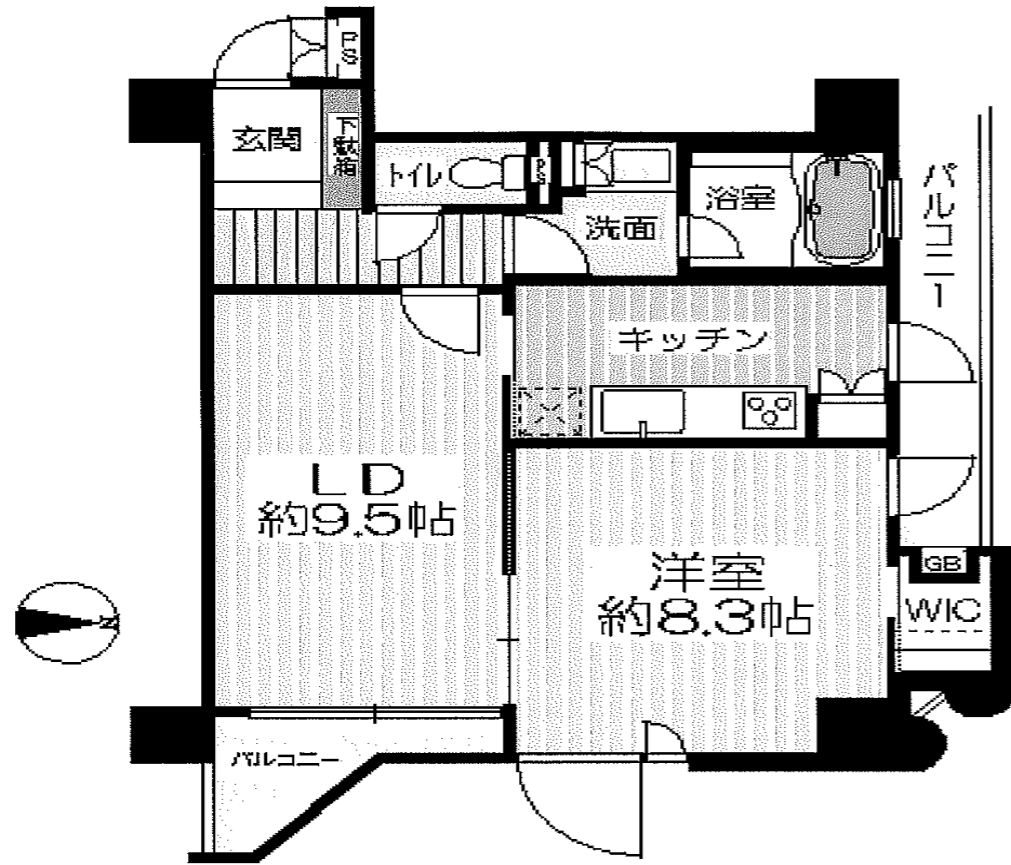


# GUIDE

No: 20000919473



This picture is the thumbnail, If the picture is not in conformity with the actual conditions, the actual conditions shall prevail.

**FUKUYAKA Real Estate Consulting (Shanghai) Co., Ltd.**

Room68 38F NO.1601 West Nanjing Road, Jing'an District, Shanghai

TEL : 021-6136-3272

FAX : 021-6137-3210

Business Hours : 9:00AM to 17:00PM

MAIL : info@fukuyaka.cn

URL : http://www.fukuyaka.cn

# FUKUYAKA

Principal	Operator	Form

# OUTLINE

Building Name	ASAHI PLAZA ALTIMA TOWERS			
Price	1,500 ten-thousand yen			
Cost	Management Fee	7,150 yen	Maintenance Reserve	12,870 yen
Location	Chuo 2-chome , Joto-ku, Osaka-shi, Osaka.			
Traffic Routes	Nearest station	Keihan Electric Railway Keihan Line【 Noe 】Station walk 6 minutes		
	Other station	Nagahori-Tsurumiryokuchi Line【 Gamoyonchome 】Station walk 6 minutes		
Land	Land Area	Register:1344.26m <sup>2</sup>	Land Rights	4989/415772
	Ownership Nature	Ownership	Incidental Rights	/
	Territorial Law	/	Planning Land	Quasi-industrial districts
property	Balcony Size	8.51m <sup>2</sup>	Balcony Aspect	north
	Floor Area	52.64m <sup>2</sup>	Floor Layout	1LDK
	Structure	SRC structure14 floors above ground.The first floor of a basement This property is on F3		
	Year Built	Apr,1992	Number of units	62 units
	Construction Master	Asahi juken Co., Ltd.	Construction Unit	Asahi community Co.,Ltd.
	Management Company	Global community Co., Ltd.	Management Form	All commissioned &Day shift
Facilities /Equipment	Electricity	✓	Waterway	✓
	Sewage System	✓	Gas	City Gas
	Parking	✓	Parking Fee/M	13,000~14,000 yen
	Automatic door locks	✓	Elevator	✓
Other	system kitchen, Water Purifier, hot water system, Indoor washing machine place, entrance hall, Manager 's office, bicycle parking space, Intercom with monitorl			
Comments	States	vacant	Delivery	conference
	<ul style="list-style-type: none"> <li>•mechanical type parking space have five vacancies (monthly: 13,000yen)</li> <li>•bicycle parking space have ten vacancies (monthly: 1,200yen)</li> <li>•water-rate: 1,512yen,</li> <li>•Community membership fee:250yen</li> </ul>			