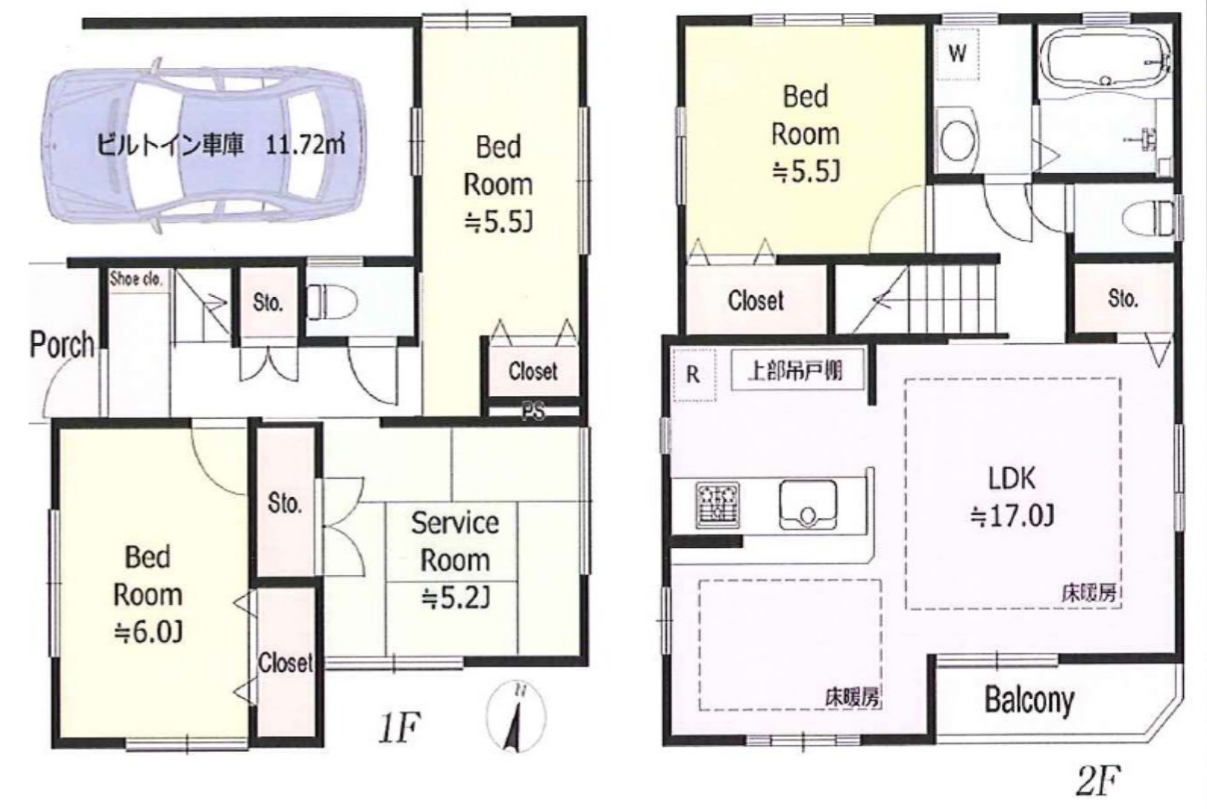


# OUTLINE

|                                |  |   |                              |  |
|--------------------------------|--|---|------------------------------|--|
| <b>Price</b>                   | <b>4,490 ten-thousand yen</b>  |   |                              |  |
| <b>Creation Date</b>           | Jun.13, 2017,  | <b>Type</b>   | Detached House               |  |
| <b>Building Name</b>           | /  | <b>Object of Sale</b>   | land and building            |  |
| <b>Location</b>                | 5-18-23, Sakaecho, Tachikawa-shi, Tokyo  |   |                              |  |
| <b>Traffic Status</b>          | ①Tama Monorail Line, [Tachihi] station : 13 min-walk.<br>②Chuo Line, [Tachikawa] station by train then change the bus to [Kosha Jutaku] bus station : 1 min-walk.  |   |                              |  |
| <b>Land/Contact Road</b>       | <b>Owership Form</b>   | owership  | <b>Land Category</b>         | residential land                         |
|                                | <b>Area</b>  | registry : 87.29㎡ (26.40)   | <b>Share of the Land</b>     | /  |
|                                | <b>Set-back</b>  | /   | <b>Size of Set-back</b>      | /  |
|                                | <b>Connecting road Type</b>  | public road   | <b>Connecting road State</b> | one side                                 |
|                                | <b>Connecting road Direction</b>   | west  | <b>Road Width</b>            | 10m                                      |
|                                | <b>Length of Tangent</b>   | 9.6m  | <b>Terrain</b>               | Flat                                     |
| <b>Building</b>                | <b>Owership Form</b>   | Owership  | <b>Floor Layout</b>          | 3SLDK                                    |
|                                | <b>Date of Completion</b>  | Feb.2015,   | <b>Structure</b>             | timber slate roof, 2floors above ground. |
|                                | <b>Area</b>  | <b>Each Floor Area</b>  | 1F<br>51.47㎡                 | 2F<br>52.07㎡                             |
| <b>Total Floor Area</b>        |  | registry: 103.54㎡ (31.32 tsubo)   |                              |  |
| <b>Legal Restrictions</b>      | <b>Use Districts</b>   | Category 1 medium-to-high-rise Exclusive Residential Districts  | <b>City Planning</b>         | Urbanization Promotion Area              |
|                                | <b>Building Coverage Ratio</b>   | 60%   | <b>Floor Area Ratio</b>      | 200%                                     |
|                                | <b>Other Restrictions</b>  | Category 2 Altitude Districts, Quasi-fire Proof District.   |                              |  |
| <b>Facilities</b>              | <b>Watherworks</b>   | ✓   | <b>Electricity</b>           | ✓  |
|                                | <b>Sewage</b>  | public water supply   | <b>Entrance</b>              | /  |
|                                | <b>Gas</b>   | city gas  | <b>Parking</b>               | ✓(1 lot)                                 |
|                                | <b>Other Facilities</b>  | Automatic Bath, Reheating Function, Bathroom Dryer, Shower Toilet, 2 Toilets, System Kitchen, Counter-Kitchen, Hot Water Supply, Shampoo Dresser, Double Glazing Window, Shutter, Lamp, Air Conditioner, Floor Heating, CATV, Light Internet, Cable Internet, Intercom with Monitor, Fire Alarm(sensor), house Ventionation System. |                              |  |
| <b>Neighborhood Facilities</b> | •To Tachikawa 8th Elementary School about 700m, To Tachikawa 6th Middle School about 1000m.<br>•To Fukushima supermarket Tachikawa store about 270m .<br>•To 7-11 convenience store Sakaecho 3-chome Tachikawa about 600m.<br>•To Lalaport Large-scale Commercial Facilities Tachikawa about 900m. |   |                              |  |
| <b>Notes</b>                   | •The LD area is over 31㎡. Built-in Tapy Parking. •This building was built in February 2015 .   |   |                              |  |

# FLOOR PLAN

No : 20000929269



## FUKUYAKA Real Estate Consulting(ShangHai)Co.,Ltd.

ADD: 〒200040 Room68 38F NO.1601 West Nanjing Road, Jing'an District, ShangHai.

**FUKUYAKA**

TEL: 021-6137-3272

FAX: 021-6137-3210

MALL: info@fukuyaka.cn

URL: http://www.fukuyaka.cn

**※Reproduction Strict Prohibiton. Please don't Insertion!**

※The contents of this source information is the apartment's view, if it doesn't match with real contents, Please actual map as a benchmark.

※It is strictly prohibited to contact the buyer or to contact with the related party by using the information of the property, otherwise we will obtain the corresponding compensation by legal means.

|           |          |      |
|-----------|----------|------|
| Principal | Operator | Form |
|           |          |      |

